

GN 310-NI

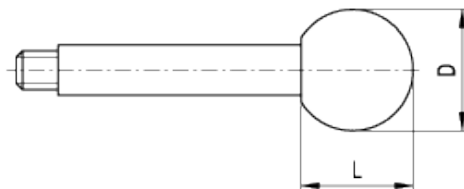
Lever arms



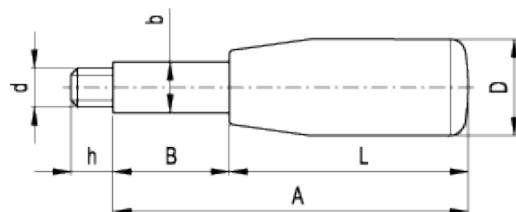
INOX
Stainless Steel



GN 310-A



GN 310-E



technical informations

Arm

AISI 303 stainless steel.

Fixed handle

Black Duroplast available in two different shapes:

- execution A: ball knob.
- execution E: cylindrical knob.

Features and applications

AISI 303 stainless steel, thanks to its high resistance to corrosion, allows the application of these lever arms on machines and equipment in those sectors where laws or particular hygienic, climatic and environmental factors make it mandatory to use corrosion resistant materials.

| Standard Elements | Main dimensions | | | | | | | Weight |
|-------------------|-----------------|---|---|---|---|---|---|--------|
| Description | A | D | L | B | b | d | h | g |

| | | | | | | | | |
|--------------------|-----|----|------|-------|----|-----|----|-----|
| GN 310-8-63-A-NI | 63 | 20 | 18 | 45 | 8 | M6 | 9 | 30 |
| GN 310-8-63-E-NI | 63 | 18 | 40 | 23 | 8 | M6 | 9 | 27 |
| GN 310-8-80-A-NI | 80 | 20 | 18 | 62 | 8 | M6 | 9 | 36 |
| GN 310-8-80-E-NI | 80 | 18 | 40 | 40 | 8 | M6 | 9 | 33 |
| GN 310-8-100-A-NI | 100 | 20 | 18 | 82 | 8 | M6 | 9 | 44 |
| GN 310-8-100-E-NI | 100 | 18 | 40 | 60 | 8 | M6 | 9 | 41 |
| GN 310-10-80-A-NI | 80 | 25 | 22.5 | 57.5 | 10 | M8 | 11 | 55 |
| GN 310-10-80-E-NI | 80 | 21 | 50 | 30 | 10 | M8 | 11 | 50 |
| GN 310-10-100-A-NI | 100 | 25 | 22.5 | 77.5 | 10 | M8 | 11 | 63 |
| GN 310-10-100-E-NI | 100 | 21 | 50 | 50 | 10 | M8 | 11 | 62 |
| GN 310-10-125-A-NI | 125 | 25 | 22.5 | 102.5 | 10 | M8 | 11 | 78 |
| GN 310-10-125-E-NI | 125 | 21 | 50 | 75 | 10 | M8 | 11 | 78 |
| GN 310-12-100-A-NI | 100 | 32 | 29 | 71 | 12 | M10 | 14 | 103 |
| GN 310-12-100-E-NI | 100 | 23 | 65 | 35 | 12 | M10 | 14 | 81 |
| GN 310-12-125-A-NI | 125 | 32 | 29 | 96 | 12 | M10 | 14 | 123 |
| GN 310-12-125-E-NI | 125 | 23 | 65 | 60 | 12 | M10 | 14 | 103 |
| GN 310-12-160-A-NI | 160 | 32 | 29 | 131 | 12 | M10 | 14 | 154 |
| GN 310-12-160-E-NI | 160 | 23 | 65 | 95 | 12 | M10 | 14 | 133 |
| GN 310-14-125-A-NI | 125 | 35 | 32.5 | 92.5 | 14 | M12 | 16 | 159 |
| GN 310-14-125-E-NI | 125 | 26 | 80 | 45 | 14 | M12 | 16 | 125 |
| GN 310-14-160-A-NI | 160 | 35 | 32.5 | 127.5 | 14 | M12 | 16 | 202 |
| GN 310-14-160-E-NI | 125 | 26 | 80 | 80 | 14 | M12 | 16 | 168 |
| GN 310-14-200-A-NI | 200 | 35 | 32.5 | 167.5 | 14 | M12 | 16 | 250 |
| GN 310-14-200-E-NI | 200 | 26 | 80 | 120 | 14 | M12 | 16 | 216 |



STANDARD MACHINE ELEMENTS WORLDWIDE